

State of Wyoming Corner Record

(In compliance with the *CORNER PERPETUATION AND FILING ACT*, Wyoming Statutes, 1997 Section 33-29-140 et. seq., and the Rules and Regulations of the Board of Professional Engineers and Professional Land Surveyors)

Reverse side of this form may be used if more space is needed.

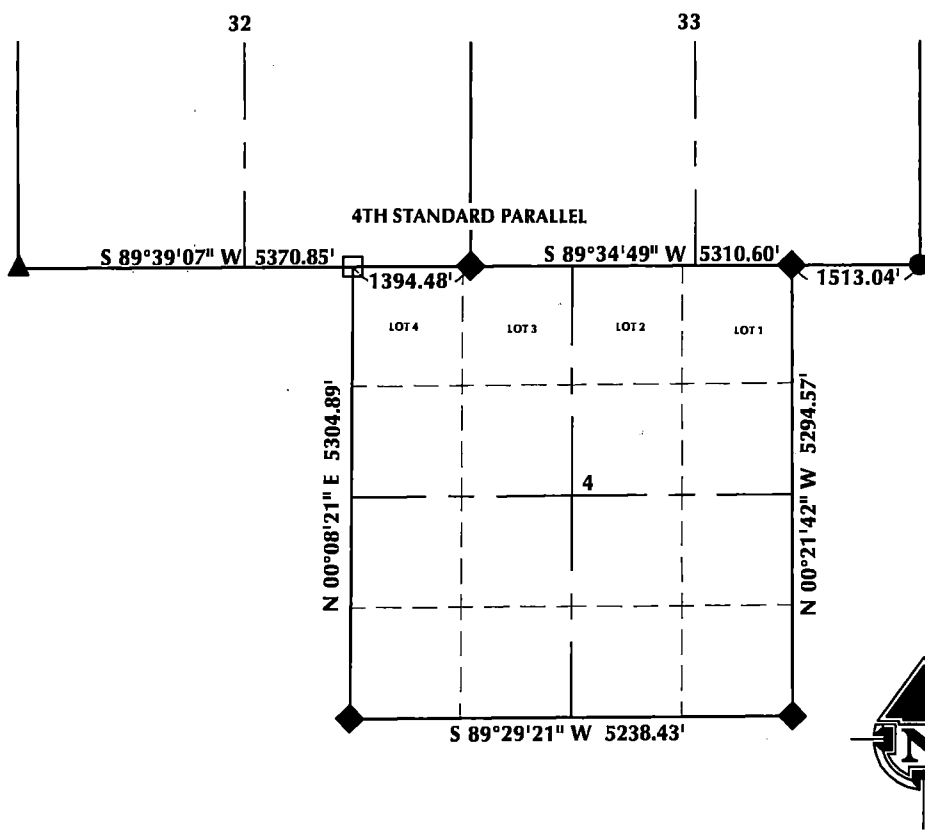
Record of original survey and citation of source of historical information (if corner is lost or obliterated). Description of corner monumentation evidence found and/or monument and accessories established to perpetuate the location of this corner. Sketch of relative location of monument, accessories, and reference points with course and distance to adjacent corner(s) (if determined in this survey). Method and rationale for reestablishment of lost or obliterated corner.

ORIGINAL RECORD: Intersected the 4th Standard Parallel 18.73 links East of the 1/4 section corner on the South Boundary of Section 32 at which point; Set a sand stone 18x12x6 inches for C.C. to Sections 4 & 5.

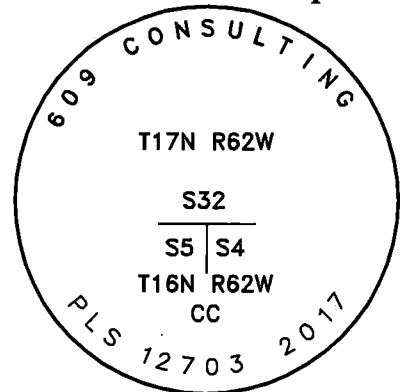
FOUND: Nothing

SET: Set 2 1/2" aluminum cap, stamped PLS 12703, on #5 rebar 8" below the intersection of County Road 150 and County Road 227. Set monument at the intersection of the centerline of County Road 150 with the 4th Standard Parallel.

Monument Location



Monument Inscription



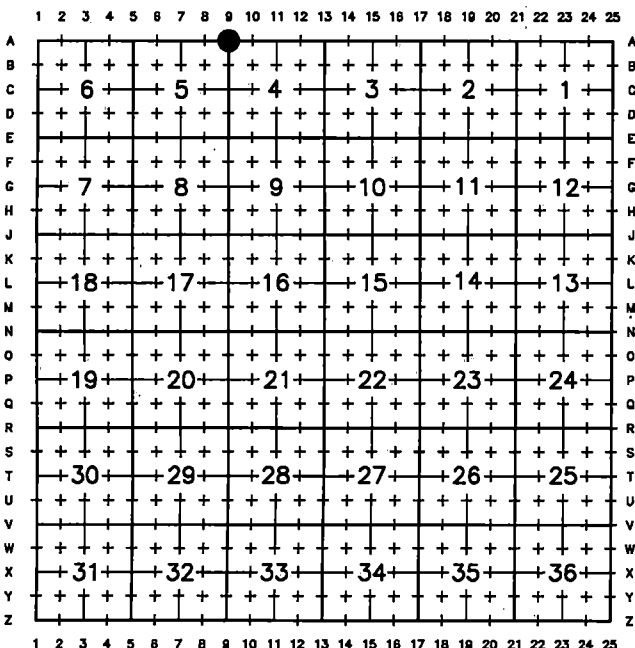
NOTES:

1. ▲ INDICATES FOUND BRASS CAP
2. ● INDICATES FOUND ALUMINUM CAP
3. ◆ INDICATES SET ALUMINUM CAP
4. ■ INDICATES FOUND STONE
5. □ INDICATES SECTION CORNER PER CORNER RECORD
6. BASIS OF BEARING DERIVED FROM WYOMING COORDINATE SYSTEM NAD83 EAST ZONE
7. ALL MEASURED DISTANCES ARE GRID
8. DRAWING NOT TO SCALE

Date of Field Work: 8/9/17

Office Reference: 17-53

Cross Index Plat



Land Surveyor/Firm/Address

609 Consulting, LLC
 1095 Saberton Avenue
 Sheridan, WY 82801
 Telephone Number: 307-674-0609

This corner record was prepared by me or under my direction and supervision.



RANDALL K. FRENCH
 PROFESSIONAL LAND SURVEYOR
 WYOMING REGISTRATION NUMBER 12703



RECP #: 715188
 RECORDED 9/5/2017 AT 10:38 AM BK# 2557 PG# 634
 Debra K. Lee, CLERK OF LARAMIE COUNTY, WY PAGE 1 OF 1

Corner Name: Northwest Corner Section 4, T16N, R62W, 6th P.M. County: Laramie Wyoming

Cross-Index No.: A-9

SBRPEPLS/PLSW: March 1994; PLSW January 1998